

COMPANY WITH  
QUALITY SYSTEM  
CERTIFIED BY DNV GL  
= ISO 9001 =



**MAGIC**

## TIRE CHANGERS



**MEMORY**



**SPEEDCHANGER**



**30 SECONDS!**

G

1150.30  
*magic*

8945  
*memory*

8645  
*slivo*

7645

7246

7240

GTB16N

GRS926

G9156.11N



SINCE 1958

## MAGIC IT 30" LEVERLESS

### G 1150.30 MAGIC IT

30" center locking premium no lever system. Includes pneumatic help device, wheel lift, and inflater/bead blast. Driven by powerful 230 volt motor with true variable speed control.



10" - 30"      45" (1143 mm)      15" (381 mm)

#### TECHNICAL DATA

Handled wheels from	10" - 26" / 12" - 28" / 14" - 30"
Max wheel weight	15"
Max wheel diam.	45"
Bead breaker pow. (each arm)	2645 lbs
Bead breaker movement	Automatic
Rotation motor	1,5 Kw inverter motor + 0,75 Kw motor
Recommended air supply	8-10 bar / 115-145PSI
Power supply	1 ph, 200 / 265v

## 0-15 INVMOTOR RPM VARIABLE SPEED

The electrical motor is equipped with an exclusive and innovative inverter, which:

- allows to regulate rotation speed by pressing the pedal
- slows down rotation speed as the stress on the bead increases (to avoid any damage to the tyre)



### OPTION G1000A135 Side bead braked



### STANDARD G1000A127 Pneumatic wheel lift



Bead blaster



The real no lever  
tire changer



# MAGIC

## EXCLUSIVE AUTO-TOUCH FUNCTION

G1150.30 MAGIC IT  
+ PLUS93 + G1000A127  
+ G1000A80/S



The tool enters between  
bead and rim



Levering on the rim, the  
tool pulls up the bead,  
minimizing tire stress



Safe and easy mounting with  
plastic tool, roller and rotating  
helper PLUS93

## EASY ROLLER



The bead-breaking is performed by means of an EASY ROLLER:

- bead-breaking in correct position
- easy rotation of the roller
- automatic side-movement of the roller
- memorized position for bead breaking of lower side

### Easy Demounting (upper bead)

Bead demount controls: down and up and the bead is demounted



Patented tool in plastic anti-scratch material

### Easy Demounting (lower bead)



Quick locking unit (standard)

Two position locking plate for standard or reverse rims

### Space Saver

Post with "space saver" vertical movement

### Tool Memory

Rim edge "memory" controls: place it first time, then it will go back to same position just pushing a pedal

Lever for quick opening of bead breaker arm

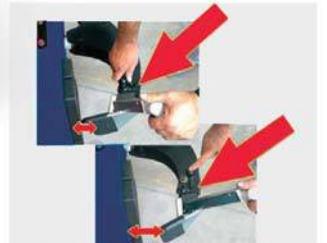


### Easy Bead Breaking

1 + 2 + 3



Roller rotation 180°



G800A26 - Bead-breaker adaptor with tilting adjustment

### 0-16 INVE MOTOR RPM VARIABLE SPEED

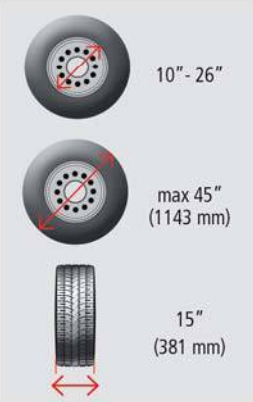
#### TECHNICAL DATA

Handled wheels from	10" - 26"
Max wheel diameter	45"/1143 mm
Max wheel width	381 mm (15")
Max side shovel bead loosener opening	432 mm (17")
Recommended air supply	8-10 bar / 115-145PSI
Rotation motor	1,5 Kw inv.+ 0,75kw motor
Bead loosener power (roller)	1200 kg (2645 lbs)
Bead loosener power (side shovel)	3600 kg (7900 lbs)

G8945DS.ITA + G800A26

# MEMORY

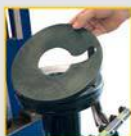
### STANDARD



Bead pusher with pulling system



Centering adaptor



Protection



TOP inflation device



Extension and guard

5 models include 1 + 2 + 3

1 PLUS91AKC HELPER

2 INFLATION BY PEDAL

3 G800 A121 WHEEL LIFT





## A NEW TAKE ON A FAMILIAR DESIGN

The first conventional table clamping tire changers that quickly and safely change standard, low-profile and run-flat tires plus difficult and expensive custom rims - without a tire tool.



### PATENTED LEVER-FREE TOOL

Fits between the tyre and rim and takes hold of the bead, gradually lifting it without the aid of bead-lifter levers.



The exclusive SLIVO working movement allows to catch the lower bead with no use of the PLUS device.



External clamping	10" - 26"
Internal clamping	12" - 28,5"
Max. tire diameter	45"
Max. rim width	17"
Max. bead breaker opening	17"
Bead breaker cylinder power at 175 psi	8000lbs
Motor	220v 60 cycles 1hp
Turntable rotation speed	0-16 rpm
Max torque to turntable	1400 Nm



Ravaglioli **FN**

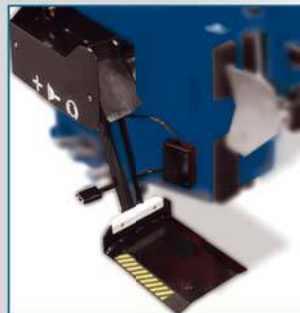
G8645ID.26 + Plus83H  
+ G800A26

### SLIVO G8645ID.26 LEVERLESS TILT-BACK

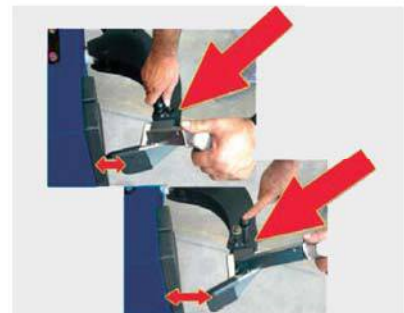
Patented no-lever action  
26" Outside clamping  
220 volt variable speed drive  
8000 psi bead breaker  
Plus 83 pneumatic help (optional)  
Wheel lift (optional)

**0-16 INVMOTOR  
RPM VARIABLE SPEED**

### OPTIONS



G800A35 - Wheel Lift



G800A26 - Bead-breaker adaptor with tilting adjustment

The frame is large and reinforced, to grant the utmost rigidity to the structure and chucking table.

The gear box is installed between two steel plates, to avoid flexion during operation.

The extra height of the vertical post and tool shaft allow operation on tyres to a max. of 17" (431 mm) width.

### CONTROLS

- Sturdy and ergonomic handle.
- Tool locking with automatic setting of appropriate distance from the rim.

### ROLLER

- To facilitate arm movement during tool positioning.

### PEDAL ASSEMBLY

- Pedals in press-cast aluminium.
- The pedal assembly can be removed as an integral unit allowing easy servicing.



### TOOL



- Tool with integrated protection for alloy rims
- Adjustable angle and rotation.

### VALVE TRAY

### 0-15 INVE MOTOR RPM VARIABLE SPEED

### BEAD BREAKER

- The bead breaker opening can be adjusted into 2 positions to work with extreme rapidity.
- Jointed and shaped blade to facilitate bead breaking.
- Galvanised cylinder with double operation.

G7645ID.26 + G800A26



External clamping	10" - 26"
Internal clamping	12" - 28,5"
Max. tire diameter	45"
Max. rim width	17"
Max. bead breaker opening	17"
Bead breaker cylinder power at 175 psi	8000lbs
Motor	220v 60 cycles 1hp
Turntable rotation speed	0-16 rpm
Max torque to turntable	1400 Nm

### I-TYPE = BEAD-SEATER (TUBELESS INFLATOR)

Models with tubeless tyre inflation system. The device is activated by a single pedal command with two positions.

PLUS 83H



G800A116

## G7246ID.26A SPEEDCHANGER

26" outside clamping  
 220 volt variable speed drive  
 8000 lb. bead breaker  
 PLUS 91SA helper device optional

High performance swing arm tire changer for the high volume tire center. Exclusive 220v drive motor provides needed torque for handling today's difficult assemblies. True variable speed control allows operator to match turnable rotational speed with the job at hand.

The frame is large and reinforced, to grant the utmost rigidity to the structure and chucking table. The gear box is installed between two steel plates, to avoid flexion during operation. The extra height of the vertical post and tool shaft allow operation on tyres to a max. of 15" (381 mm) width.

### PEDAL ASSEMBLY



- pedal in press-cast aluminium
- pedal assembly can be removed as an integral unit allowing easy servicing

# SPEEDCHANGER

G7246ID.26A +  
 G800A26

0-15 INVE MOTOR  
 RPM VARIABLE SPEED

NEW ARM DESIGN

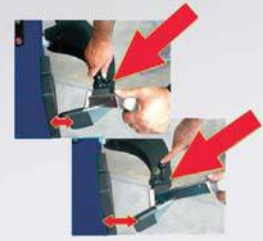
AIR TANK IN THE COLUMN

VALVE TRAY

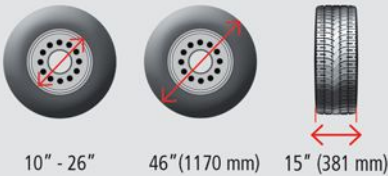
EXTRA LARGE



EXTRA WIDE (BALOON TYPE)



G800A26 - Bead-breaker adaptor with tilting adjustment



### OPTION PLUS91SA HELPER



DEMOUNTING (lower bead)

TECHNICAL DATA	G7246ID.26A
External clamping	10" - 26"
Internal clamping	12" - 28.5"
Max. tire diameter	46" (1200 mm)
Max. rim width	15" (380 mm)
Max. bead breaker opening	15" (380 mm)
Bead breaker cylinder power at 175 psi	8000 LBS (3600 kg)
Motor	220V 1 hp
Rotation speed	0/15 rpm
Max. turntable torque	1200/900 Nm

## G72401.22 SWING ARM 22/24

- Top European quality at an entry level price.
- Heavy duty structure to guarantee proper working conditions at all times.
- 110 volt single speed motor.
- 22" outside clamping.
- 24" inside clamping.
- Tire diameters of 40".
- Bead breaker: galvanized cylinder with simple operation.
- Rigid self-centering chuck and wide clamping range.



Up to 22"  
outside  
clamping



G72401.22

- Heavy duty structure to guarantee proper working conditions at all times.
- Galvanized cylinder with double operation.
- Rigid self-centering chuck and wide clamping range.



Tool with intergrated  
protection for alloy rims



The pedal assembly can be  
removed as an integral unit  
allowing easy servicing.



TECHNICAL DATA	G72401.22
External clamping	10" - 22"
Internal clamping	12" - 24"
Max. tire diameter	40" (1000 mm)
Max. rim width	12" (305mm)
Max. bead breaker opening	12" (305 mm)
Bead breaker cylinder power at 175 psi	8000 lbs (3600 kg)
Motor	110V - 1 hp
Rotation speed	9 rpm
Max. turntable torque	1200 Nm



**PLUS 91N**  
Bead top pressing and tyre lifting  
device for large and special tyres.



**I-TYPE = BEAD-SEATER (TUBELESS INFLATOR)**

# Newly Updated for Greater Power and Capability!!!

## TIRE TECH GTB16N BULLET

### DEMOUNTS AND MOUNTS TUBELESS TRUCK TIRES IN 30 SECONDS!

Full size industrial clamping unit, allowing 30% more clamping force.

Clamping range increased from 17"-24.5" to 14"-27".

Minimum clamping height 13 3/8" allowing to clamp rims directly from the ground.

Bead breaking force increased by 20% (on both front and rear rollers).

Optional accessory G108A24 (metal disc) to demount tires with lock ring.

Easy to use controls.



Improves shop's efficiency up to 50%



GTB16N

#### SPEED DEMOUNTING



#### SPEED MOUNTING



#### TECHNICAL DATA

Maximum wheel diameter	27"
Minimum wheel diameter	14"
Gear box motor	3 HP
Max diam. central hole	11 1/2" (288 mm)
Min diam. central hole	3 1/2" (85 mm)
Power supply	3 ph - 220 v
Rotating speed	10 rpm



11" - 27"



1320 mm (52")



540 mm (21")

#### STANDARD GTB16N / GR5926



G108 A3 Patented truck lever

#### OPTIONS



G108A2  
Jaws for alloy wheels



G90A6  
Bead-locking clamp for alloy rims



G108A8  
Plastic coated rings kit



G108A7  
Jaws for Dayton wheels



G108A9  
Plastic tool protection





Great also for  
changing difficult  
light truck tires



## GRS926

Truck tire changer for both road-side and workshop service, suitable for closed vans and/or small workshops.

Controls on console  
Hydraulic chucking table  
Suitable also for agricultural tries

TECHNICAL DATA	
Chucking unit rotation motor	1,1 HP
Hydraulic drive unit motor	2 HP
Rim Ø	11"-27"
Max. wheel Ø	51"
Max. allowed wheel width	37,4"
Weight	833 lbs
Bead breaker power	16000
Max wheel weight	2645 lbs
Chuck rotation speed	8 rpm



Hydraulic Up -Down Movement  
\* MINIMUM HEIGHT 13" (330 mm)  
MINIMUM CLAMPING Ø 4" (90 mm)

### QUICK DEMOUNTING



### QUICK MOUNTING



11" - 43"  
11" - 56"  
(+G108A12)



2300 mm (90,5")



1000 mm (43")

## G9156.11N

Controls with lever type hydraulic distributors

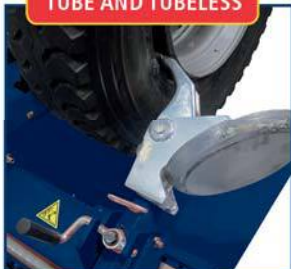
TECHNICAL DATA	
Chucking unit rotation motor	3 hp
Hydraulic drive unit motor	2 hp
Rim Ø	11"-43"
Rim Ø with G108A1	11"-56"
Max. wheel Ø	90,2"
Max allowed wheel width	43"



**SUPER DUTY**

G9156.11N

### TUBE AND TUBELESS



### QUICK MANUAL ROTATION



Manual tool rotation with spring loaded

RAV offers more than 20 models of heavy duty tire changing systems. Models to fit virtual every application and budget

**SPECIAL ORDER**

## ACCESSORIES FOR LEVERLESS MAGIC 1150.30



**G1000A81K** (10 x kit)  
Set of rubber protections for support plate



**G1000A70K** (5 x kit)  
Set of protections for pulling unit



**G1000A66K** (5 x kit)  
Set of protections of locking cone



**G1000A117**  
Upper tool  
G1150.30 MAGIC



**G1000A113**  
Upper tool  
G8945 MEMORY



**G1000A80**  
Quick-fit locking  
G1150.30 MAGIC

## SLIVO KIT



PATENTED  
BREVETTATO



**G800A82** → for G7645  
For tilt back tyre changers.



**G800A87** → for G7246  
For swing arm tyre changers

The kit can also be assembled with quick change kit G800A70



**G800A75**  
Shaft coupling for quick tool change

**No** lever required for safe and efficient changing !!!



**G800A72**  
Car plastic tool with hub for quick coupling



**G800A74**  
Motorbike plastic tool with hub for quick coupling



**G800A76**  
Tool for ATV wheels with hub for quick coupling



**G800A73**  
Pivoting plastic tool with hub for quick coupling



**G800A110**  
Tool suitable also for rims with protruding spokes with hub for quick coupling.

## HELPER TILTBACK



**PLUS83H**  
Air-driven helper  
with rotating arm

## OPTIONS



**G800A116**  
Additional  
hexagonal arm

## HELPER SWING ARM



**PLUS915A for G7246**  
**PLUS91N for G7240**  
Pneumatic helper with  
rotating arm



**G800A69 → PLUS915A**  
Wheel lift



**G800A35**  
Pneumatic wheel lifter.



**G800A101 - G800A102**  
Bead breaker control by lever



**G1000A32**  
24" bead pushing device  
with pulling system.



**G1000A36**  
Extension (24" → 28")



How to use



**G84A13**  
Bead-locking clamp.

20" NEW  
22" NEW  
Higher clamps  
(from July 2013)



18"  
20" OLD  
22" OLD  
Standard clamps

## PROTECTIONS



G800A5 (4 x kit) → 18"  
→ 20" OLD  
→ 22" OLD

G800A5K - Kit 10 x G800A5



G800A98 (4 x kit) → 20" NEW  
→ 22" NEW

G800A98K - Kit 10 x G800A98



G800A6 (4 x kit) → 24"  
→ 26"  
→ 28"

G800A6K - Kit 10 x G800A6

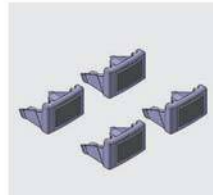
STANDARD



Anti-skid plastic insert



G800A7 (4 x kit) → 30"  
Clamp protection kit  
G800A7K - Kit 10 x G800A7



G800A54 (4 x kit) → G800A7  
Protection kit for inside clamping  
G800A54K - Kit 10 x G800A54



G800A8 (2 x kit)  
Tool protection kit  
G800A8K - Kit 10 x G800A8



G84A17 (2 x kit) → G84A30N  
Tool protection kit  
G84A17K - Kit 10 x G84A17



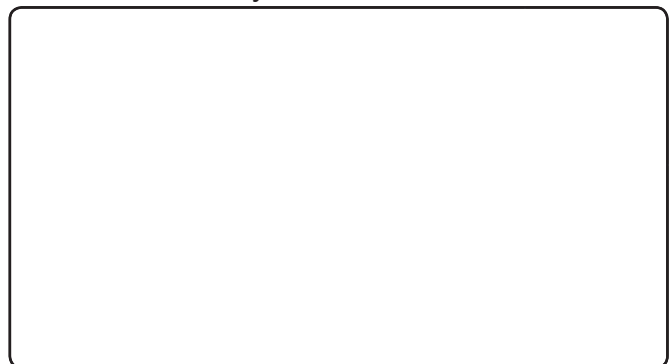
G800A11  
Bead breaker blade protection  
G800A11K - Kit 5 x G800A11



G800A32  
Run Flat bead protection



Distributed by



COMPANY  
WITH QUALITY SYSTEMS  
CERTIFIED BY DNV  
=ISO 9001/200=